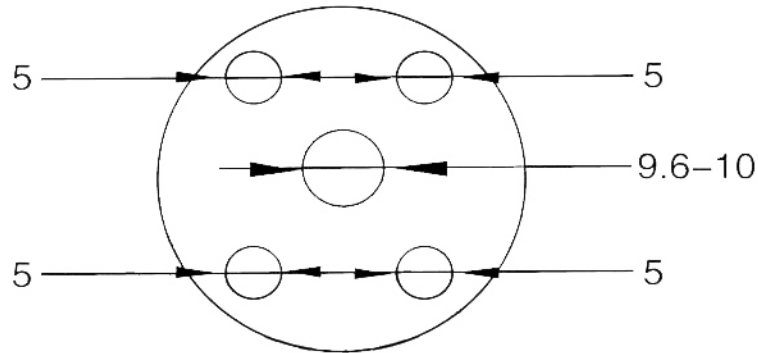


Propeller

- 1.Recommended prop size
- 2.The recommended prop sizes are as shown in table bellow

Diameter X Pitch(in.)
22X8, 22X10 to 24X8 (2-Blades)



Propeller Mounting Template
(Unit:mm)

Side Prop Bolt 5mm Middle Prop Bolt 10mm
Or you can buy drill jig tools from authorized distributors,
so that you can easily drill the suitable holes in the propellers .

Propeller Hub Drill Guides :



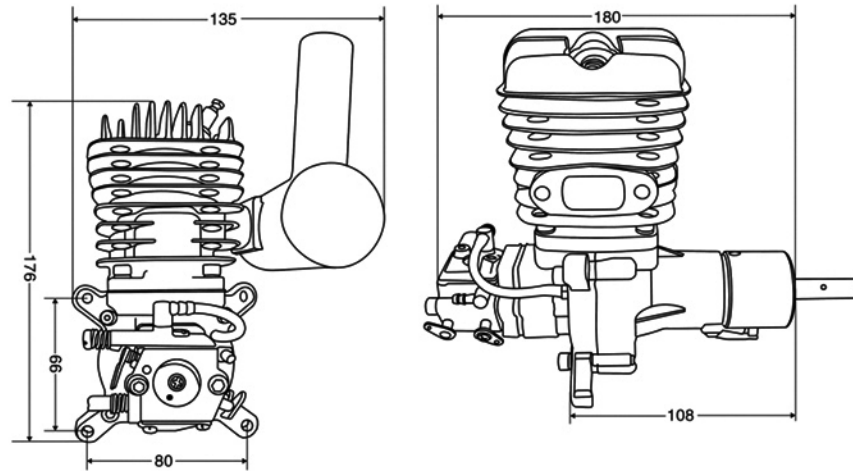
50cc GAS ENGINE



Displacement (cc):	50cc (Single Cylinder)
Bore x Stroke (mm):	44mm*35mm
Carburetor:	Walbro Pump(made in Japan) & Made in china (Diaphragm butterfly valve type)
Ignition:	DC-CDI (Computer Controlled auto advance, electronic ignition system)
Power supply:	4.8-6V
Maximum Output:	5.1 hp/3.8KW
speed rang:	1500-7800rpm
Gasoline-Version:	Pre-mixed Fuel, 25-40 (Gasoline) :1(90 octane gasoline)
Weight - with ignition and muffler:	1560g
Weight - without ignition & muffler:	1380g
Propeller:	22*10 7200rpm (Standard Two leaves prop)

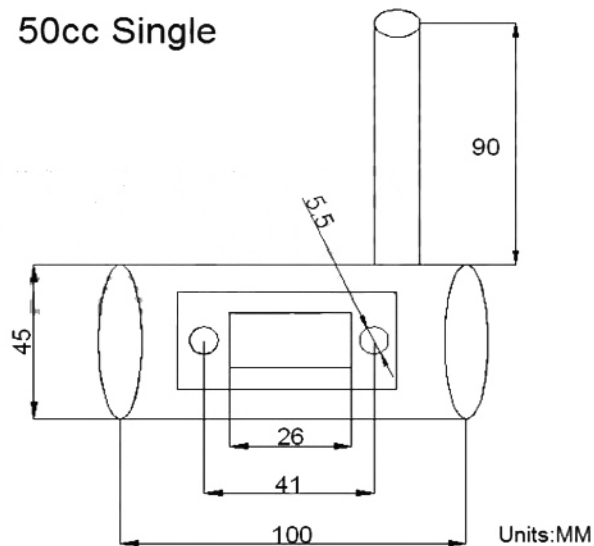
(The picture is only for reference , please check the actual object as standard.)

Dimension Photos



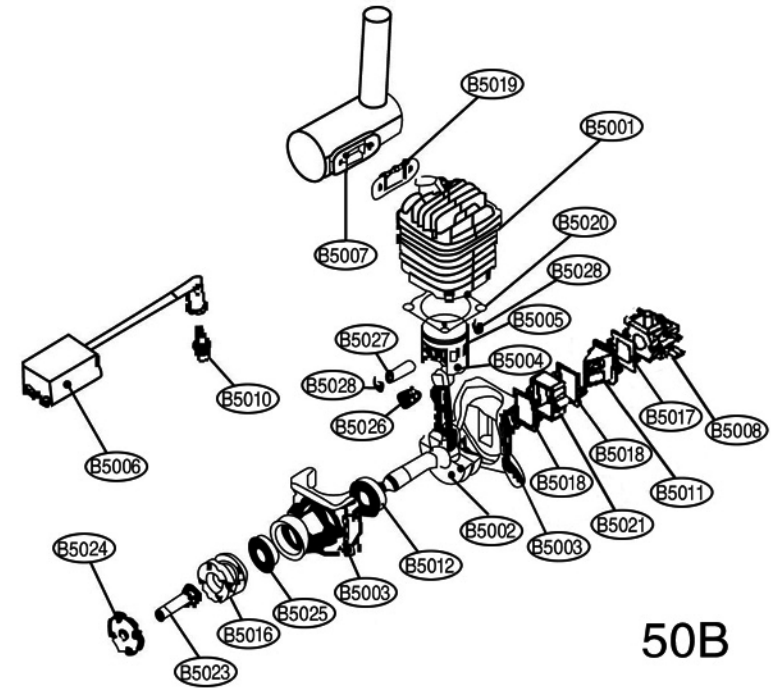
50B with small spark plug
Unit:MM

50cc Single



reserves the right to make any change or modify the dimension photo without any notice in advance.

Engine Spare part



50B

Item	Description	Accessory Number
1	CYLINDER	B5001
2	CRANKSHAFT accessory	B5002
3	CRANKCASE SET(front)	B5003
4	CRANKCASE SET(rear)	B5003
5	PISTON accessory	B5004+B5026+B5028+B5027+B5005
6	PROP HUB accessory	B5016+B5023+B5024
7	BEARINGS	B5012,B5025
8	IGNITION SET(included sensor)	B5006
9	GASKET SET	B5017+B5018+B5020+B5019
10	WRIST PIN BEARING	B5026
11	REED VALVE & INSULATOR	B5011+B5021
12	CARBURETOR	B5008
13	SPARK PLUG	B5010
14	MUFFLER	B5007
15	SCREW SET	